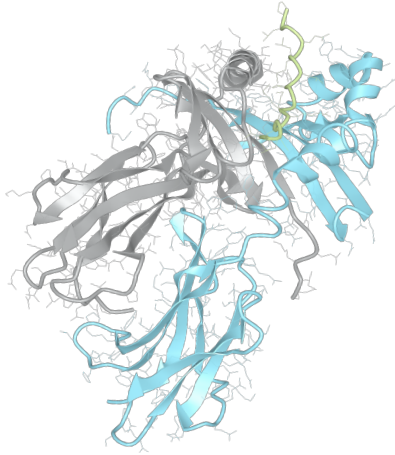


Product datasheet



sHLA– DQB1*06:04 DQA1*01:02

DQB1*0604, DQB10604, DQB1*06, DQB06, DQ6
DQA1*0102, DQA10102, DQA1*01, DQA01

| | |
|-------------------------|-------------------|
| Serological Name | DQ6 |
| Peptide Load | Endogenous |
| Modification | Unmodified |
| Conjugation | Unconjugated |
| SKU | DQB10604/DQA10102 |

Product Description

| | |
|--|---|
| Allele Name | DQA1*01:02 DQB1*06:04 |
| HLA Class | HLA Class II |
| HLA Gene Locus | HLA-DQ |
| Alternative Allele Name A Chain | DQA1*0102, DQA10102, DQA1*01, DQA01 |
| Alternative Allele Name B Chain | DQB1*0604, DQB10604, DQB1*06, DQB06, DQ6 |
| Description | Recombinant, truncated Class II soluble Human Leukocyte Antigen (sHLA), naturally folded and glycosylated, loaded with endogenous peptides. |
| Serological Name | DQ6 |
| Serological Split | DQ1 |
| Allele Frequency [World Population] | |
| A chain | 15.0% |
| B chain | 2.5% |

Associated products

[DQB10604/DQA10102bio](#)
[DQB10604/DQA10102pe](#)

Product Specification

| | |
|------------------------------------|--|
| Product name | HLA-DQB1*06:04/DQA1*01:02 |
| HLA Species | Human |
| Host Cell Line Species | Mouse |
| Clone Designation | EP366-D9 |
| Tail Specification | ZP |
| Peptide Load | Endogenous |
| Modification | Unmodified |
| Conjugation | Unconjugated |
| Complexity | Monomer |
| Protein Format | Recombinant, truncated, zipper-stabilized, soluble, non-modified, non-labeled, endogenously loaded |
| Storage Temperature | 4°C (This product should be stored undiluted) |
| Form | Liquid |
| Concentration | 1000.0 µg/ml |
| Formulation | PBS/0.02% Sodium Azide |
| pH | 7.4 |
| Purification Method | Affinity Chromatography |
| Grade | Research Use Only [RUO] |
| Authentication Verification | Sequence Based Typing |

Protein Sequences

| | |
|-----------------------------|---|
| Alpha Chain Sequence | EDIVADHVAS CGVNLQFYG PSGQYTHEFD GDEQFYVDLE RKETAWRWPE FSKFGGFDPQ GALRNMAVAK HNLNIMIKRY NSTAATNEVP EVTVFSKSPV TLGQPNTLIC LVDNIFPPVV NITWLSNGQS VTEGVSETSF LSKSDHSFFK ISYLTFLPSA DEIYDCKVEH WGLDQPLLKH WEPEIPAPMS EVDGGGGGAQ LEKELQALEK ENAQLEWELQ ALEKELAQ |
| Beta Chain Sequence | RDSPEDFYVQ FKGMCYFTNG TERVRLVTRH IYNREEYARF DSDVGVYRAV TPQGRPVAEY WNSQKEVLER TRAEALDTCR HNYEVGYRGI LQRRVEPTVT ISPSRTEALN HHNLLVCSVT DFYYPGQIKVQ WFRNDQEETA GVVSTPLIRN GDWTFQILVM LEMTPQRGDV YTCHVEHPSL QSPTTVEWRA QSESAQSKVD GGGGAQLKK KLQALKKKNA QLKWKLQALK KCLAQ |

Related Products

[DQB10602/DQA10102](#)
[DQB10603/DQA10102](#)
[DQB10301/DQA10201](#)
[DQB10602/DQA10102](#)

Applications

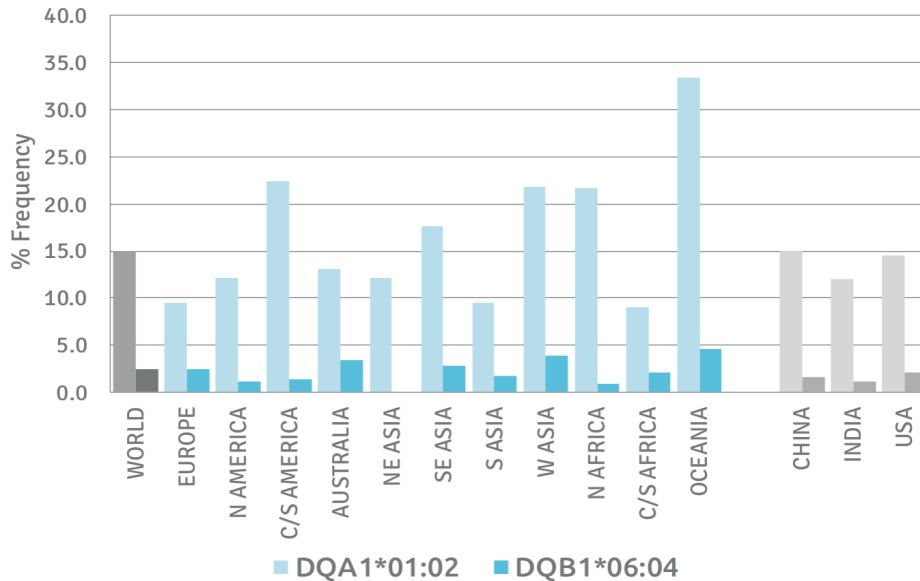
HLA Sandwich ELISAs
 HLA Direct ELISAs
 HLA-Sera Antibody Assays
 HLA Controls in ELISA Assays
 HLA Assay Standards
 HLA Blocking Assays
 HLA Neutralizing Assays
 HLA Competition Assays
 HLA Bead Assays
 HLA Immunization Procedures

Recommended Antibodies

-

Allele Frequency

Worldwide Allele Frequency



Please note:

ALL PRODUCTS ARE FOR RESEARCH USE ONLY. NOT FOR COMMERCIAL USE IN DIAGNOSTIC PROCEDURES.
 For more information, please visit our Policies section on our website. For licensing inquiries, please contact

licensing@hlaprotein.com

HLA Protein
 PURE PROTEIN LLC

